

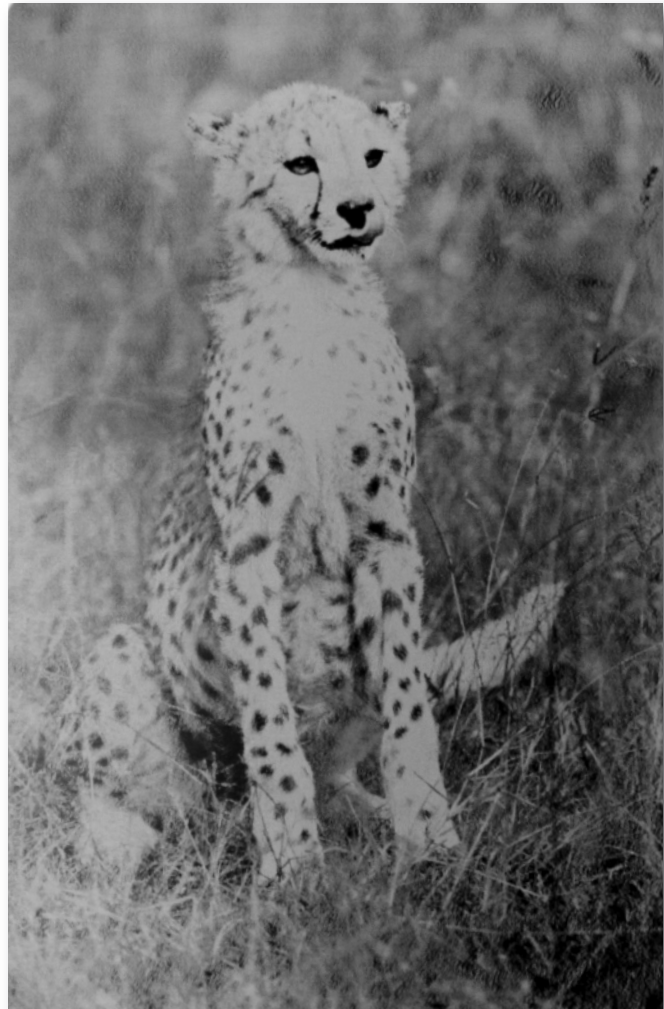
GRAVOXAL

ANODIZED ALUMINUM



- Control panels
- Legend plates
- Award plaques
- Signage
- Awards

- *Satin or glossy*
- *.020" (0.5 mm), 1/32" (0.8 mm) and 1/16" (1.6 mm)*
- *For rotary or laser engraving*
- *High detail laser engraving*



Specifications

Surface	Satin or glossy
Profile engraving depth	.004" (0.1 mm)
Full sheet: .020"	12" x 24" (305 mm x 610 mm)
Half sheet	12" x 12" (305 mm x 305 mm)
Quarter sheet	6" x 12" (152 mm x 305 mm)
Full sheet: 1/32"	24" x 24" (610 mm x 610 mm)
Half sheet	12" x 24" (305 mm x 610 mm)
Quarter sheet	12" x 12" (305 mm x 305 mm)
Composition	Aluminum

Capabilities

Interior	■		Exterior
Shear	■	■	Saw
Silk screen	■	■	Hot stamp
Scratch resistant	■		Flexible
Break resistant	■	■	UV resistant
Min. temp.	30°F/0°C	212°F/100°C	Max. temp.

		0.5 mm	0.8 mm	1.6 mm	
	Surface Color*	Core Color	.020"	1/32"	1/16"
○	satín silver	silver	34624	34617	34619
●	glossy gold	silver	34594	34592	
●	satín red	silver	34526	34519	
●	satín blue	silver	34496	34495	
●	satín black	silver	34454	34452	34453

* With all anodized aluminum, slight color variance will appear